

NuTone®

life. style. home.™

**Music Distribution and
Home Theater Systems**





Put yourself front row at a concert while sitting on your backyard patio. Feel like you are at a movie premier while lounging in your favorite chair. Create a mood with soft, soothing music in any room of your home. Bring everyday alive with music and sound through NuTone's Music Distribution and Home Theater Systems.

Turn Up the Volume of Your Life.

NuTone's speakers and accessories can change an ordinary room into a home entertainment center or home theater. Engineered for unsurpassed performance, NuTone delivers the purest sound possible in the package that fits your listening pleasure and your budget.

Our wide range of products offer a solution for any music need. With NuTone's line of speakers, you can choose where you want to place your sound – in a wall, or on the ceiling, surface mounted, inside your house or outdoors – the choice is yours. And, our full line of accessories includes subwoofers, volume controls, rough-in frames and more.

At NuTone, we stand behind our products with a 5-year warranty on speakers and a 2-year backing of all accessories. From swing to folk, from rock and roll to hip hop; music has changed dramatically over the past 60 years. But one thing hasn't changed. NuTone's commitment to quality is backed by a long-term record of service to the building industry – with over 1,000 service centers nationwide and a sales team dedicated to service.

Table of Contents

4-5	Home Theater in a Box	12	System Accessories
6-9	In-Wall, Ceiling and Center Channel Speakers	13	Whole House Audio Diagram
10	Weather Resistant and Specialty Speakers	14	Home Theater System Diagram
11	Powered Subwoofers	15	NuTone Specifications Chart

Note: The impedance of all NuTone® Speakers are 8 ohms.

Home Theater in a Box
HTIB600WBL



Simply Convenient.

Movies are captivating, with the sound surrounding you. Imagine that same all-encompassing sound in the comfort of your own living room. Now you don't have to just watch a movie. With NuTone's Home Theater in a Box, you can experience movies the way they were intended.

NuTone's 600 watt Home Theater in a Box sets the standard for sound quality and reliability. Every NuTone product is engineered with commitment to excellence and is built with premium materials and components for the purest sound possible.

The system consists of a Powered Subwoofer, two pairs of Cube Speakers (mounting hardware included), one Center Channel Speaker – all in a sleek black finish, and one white finish Wall Plate. All speakers are backed by a 5-year warranty and a 2-year warranty for the wall plate.

Powered Subwoofer features:

- Bass reflex design
- Adjustable crossover frequency and volume control switch
- Phase reversal switch



CPHT200WH
Home Theater Wall Plate – for connecting the Front Main, Center, Rear Channel Speakers and Powered Subwoofer to the A/V Receiver.



ES4110PBL – Powered Subwoofer



ES113BL – Cube Speakers



ES725BL – Center Channel Speaker

Power, RMS	100W	100W	100W
Frequency Response	35-(40-160) Hz* -6dB	120-20,000 Hz ±3dB	60-22,000 Hz ±3dB
Sensitivity	91dB	86dB	86dB

* Determined by cross-over setting
Specifications and product appearance subject to change without notice.



Style and Performance



Blend
Together

Sound needs to be heard, not seen. And, with NuTone's Professional Series speakers, they blend into the environment so the music and sounds are all you notice. No need to give up valuable floor space or shelves for your speakers. Mount them right in the walls and paint them to coordinate with the surroundings.

The three-piece, dog-eared construction requires no rough-in frames for mounting. Meets Electronics Industries Association (EIA) standards RS-426-A and are overload protected. These speakers come with NuTone's 5-year warranty.

Professional Series In-Wall Speakers

SS825

(sold in pairs)

5-1/4" Two-Way, In-Wall Speakers

- Frequency response: 60-20,000 Hz ± 3 dB
- Power handling capacity: 80 Watts RMS
- 5-1/4" Polypropylene cone woofer and two swivel, 1/2" Titanium dome tweeters with Ferrofluid™ cooled Neodymium magnet
- Sensitivity: @ 1 meter with 1 Watt input: 86dB
- No rough-in required for existing construction. Rough-in IR885 (sold separately) is available for new construction. Wall cut out dimension: 9-5/8" H x 6-3/16" W Overall dimensions: 11" H x 7-17/32" W x 2-1/2" D
- Paintable frame and grille. Color: White
- 3-piece construction (separate mounting frame, baffle and grille)
- Tweeter level control



SS826DS

6-1/2" Two-Way, Dual Voice Coil, Weather Resistant In-Wall Speaker with Switch

- Stereo sound from a single speaker
- Frequency response: 55-21,000 Hz ± 3 dB
- Power handling capacity: 100 Watts RMS
- 6-1/2" Polypropylene cone woofer and two swivel, 3/4" Titanium dome tweeters with Ferrofluid™ cooled Neodymium magnet
- Sensitivity: @ 1 meter with 1 Watt input: 86dB
- No rough-in required for existing construction. Rough-in IR886 (sold separately) is available for new construction. Wall cut out dimension: 10-3/4" H x 7-3/8" W Overall dimensions: 12-5/64" H x 8-21/32" W x 3-1/8" D
- Indoor/Outdoor (weather resistant), Aluminum grille, Stainless Steel hardware
- Paintable frame and grille. Color: White
- Patent pending design
- 3-piece construction (separate mounting frame, baffle and grille)



SS828

(sold in pairs)

8" Two-Way, In-Wall Speakers

- Frequency response: 45-22,000 Hz ± 3 dB
- Power handling capacity: 120 Watts RMS
- 8" Polypropylene cone woofer and two swivel, 3/4" Titanium dome tweeters with Ferrofluid™ cooled Neodymium magnet
- Sensitivity: @ 1 meter with 1 Watt input: 88dB
- No rough-in required for existing construction. Rough-in IR888 (sold separately) is available for new construction. Wall cut out dimension: 12-7/8" H x 8-3/4" W Overall dimensions: 14-3/32" H x 10-3/64" W x 3-1/4" D
- Paintable frame and grille. Color: White
- 3-piece construction (separate mounting frame, baffle and grille)
- Tweeter level control



SS838

(sold in pairs)

8" Three-Way, In-Wall Speakers

- Frequency response: 45-22,000 Hz ± 3 dB
- Power handling capacity: 130 Watts RMS
- 8" Polypropylene cone woofer, 2-1/4" mid range speaker and two swivel, 3/4" Titanium dome tweeters with Ferrofluid™ cooled Neodymium magnet
- Sensitivity: @ 1 meter with 1 Watt input: 89dB
- No rough-in required for existing construction. Rough-in IR888 (sold separately) is available for new construction. Wall cut out dimension: 12-7/8" H x 8-3/4" W Overall dimensions: 14-3/32" H x 10-3/64" W x 3-1/4" D
- Paintable frame and grille. Color: White
- 3-piece construction (separate mounting frame, baffle and grille)
- Tweeter level control



Ceiling and Center Channel Speakers

MS625

5-1/4" Ceiling Speaker

- Frequency response: 45-22,000 Hz \pm 3dB
- Power handling capacity: 70 Watts RMS
- 5-1/4" Polymica woofer, 1/2" swivel Titanium dome tweeter with capability of 30 degree swivel pivot and 360 degree swivel
- Sensitivity: @ 1 meter with 1 Watt input: 86dB
- No rough-in required for existing construction. Rough-in IR665 (sold separately) is available for new construction. Ceiling cut out dimension: 6-11/16" Overall size: 8" Diameter x 2-1/2" Depth
- Paintable frame and grille. Color: White
- 2-piece construction (integral baffle with frame and grille)



MS626

6-1/2" Ceiling Speaker

- Frequency response: 40-23,000 Hz \pm 3dB
- Power handling capacity: 100 Watts RMS
- 6-1/2" Polymica woofer, 3/4" swivel Titanium dome tweeter with capability of 30 degree pivot and 360 degree swivel
- Sensitivity: @ 1 meter with 1 Watt input: 89dB
- No rough-in required for existing construction. Rough-in IR666 (sold separately) is available for new construction. Ceiling cut out dimension: 7-11/16" Overall grille size: 8-7/8" Diameter x 2-13/16" Depth
- Paintable frame and grille. Color: White
- 2-piece construction (integral baffle with frame and grille)



ES725BL

Two-Way Center Channel Speaker

- Frequency response: 60-22,000 Hz \pm 3dB Bass reflex design
- Power handling capacity: 100 Watts RMS
- Two 5-1/4" Coated paper cone woofer and swivel, 1/2" Titanium dome tweeter with Ferrofluid™ cooled Neodymium magnet
- Sensitivity: @ 1 meter with 1 Watt input: 86dB
- Overall dimensions: 6-1/2" H x 20" W x 9-1/4" D



MS8W4

(sold in pairs)

4" Micro Speaker

- 4" Dual cone woofer
- Frequency response: 100-20,000 Hz (-6dB)
- Power handling capacity: 20 Watts RMS, 40 Watts Peak
- Sensitivity: @ 1 meter with 1 Watt input: 88dB
- Wall cut out dimension: 4-1/2" H x 4-1/2" W Overall grille size: 5" H x 5" W x 2-5/32" D
- Paintable frame and grille. Color: White
- 3-piece construction (separate mounting frame, baffle and grille)



Builders Series In-Wall Speakers

JS826

(sold in pairs)

6-1/2" Two-Way, In-Wall Speakers

- Frequency response: 55-20,000 Hz \pm 3dB
- Power handling capacity: 50 Watts RMS
- 6-1/2" Coated paper cone woofer and 1/2" Polyester dome tweeter
- Sensitivity: @ 1 meter with 1 Watt input: 86dB
- No rough-in required for existing construction. Rough-in IR886 (sold separately) is available for new construction. Wall cut out dimension: 10-3/4" H x 7-3/8" W Overall dimensions: 12-5/64" H x 8-21/32" W x 3" D
- Paintable frame and grille. Color: White
- 2-piece construction (integral baffle with frame and grille)



JS828

(sold in pairs)

8" Two-Way, In-Wall Speakers

- Frequency response: 45-20,000 Hz \pm 3dB
- Power handling capacity: 80 Watts RMS
- 8" Coated paper cone woofer and 1" Polyester dome tweeter
- Sensitivity: @ 1 meter with 1 Watt input: 88dB
- No rough-in required for existing construction. Rough-in IR888 (sold separately) is available for new construction. Wall cut out dimension: 12-3/8" H x 8-3/4" W Overall dimensions: 14-3/32" H x 10-3/64" W x 3-1/4" D
- Paintable frame and grille. Color: White
- 2-piece construction (integral baffle with frame and grille)



Producing out-of-this-world sound for out-of-the-ordinary needs. Bringing music to out-of-the-ordinary places has never been easier. NuTone's line of weather resistant speakers allows you to enjoy your favorite music poolside or throughout the yard. For indoor needs, our twin cube speakers allow you to sneak a speaker in the smallest area and fill a room with 2-1/2" of powerful sound.

Weather Resistant and Specialty Speakers

SS626DS

6-1/2" Two-Way, Dual Voice Coil, Weather Resistant Ceiling Speaker with Switch

- Stereo sound from single speaker
- Frequency response: 40-23,000 Hz \pm 3dB
- Power handling capacity: 100 Watts RMS
- 6-1/2" Polypropylene cone woofer, 3/4" rotatable Titanium dome tweeter with Ferrofluid™ cooled Neodymium magnet
- Sensitivity: @ 1 meter with 1 Watt input: 89dB
- Overall dimensions: 8-7/8" Diameter x 2-13/16" Depth
- Patent pending design



SS628DS

8" Two-Way, Dual Voice Coil, Weather Resistant Ceiling Speaker with Switch

- Stereo sound from single speaker
- Frequency response: 40-23,000 Hz \pm 3dB
- Power handling capacity: 100 Watts RMS
- 8" Polypropylene cone woofer, twin 1/2" swivel Titanium dome tweeters with Ferrofluid™ cooled Neodymium magnet
- Sensitivity: @ 1 meter with 1 Watt input: 89dB
- Rough-in IR668 (sold separately) is available for new construction.
- Overall dimensions: 10-3/4" Diameter x 3-1/2" Depth
- Patent pending design



ES113WH, ES113BL

2-1/2" Twin, Cube Speakers

- Frequency response: 120-20,000 Hz \pm 3dB
- Power handling capacity: 100 Watts RMS
- 2-1/2" wide range micro speakers
- Sensitivity: @ 1 meter with 1 Watt input: 86dB
- Overall dimensions: 6-3/4" H x 3-1/4" W x 4-3/4" D
- Magnetically shielded
- Cubes can be rotated independently
- Table, wall or ceiling mount
- Mounting brackets included
- Color: Available in (WH) White or (BL) Black



SS525WH, SS525BL

Two-Way, Indoor/Outdoor (Weather Resistant), Surface Mount Speaker

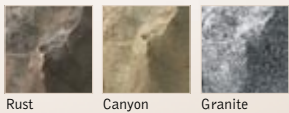
- Frequency response: 45-22,000 Hz \pm 3dB
- Power handling capacity: 70 Watts RMS
- 5-1/4" Polymica cone woofer with foam surround, one 1/2" Polycarbonate swivel dome tweeter
- Sensitivity: @ 1 meter with 1 Watt input: 86dB
- Aluminum grille, stainless steel hardware and mounting bracket included
- Bass reflex design
- Overall size: 5-7/8" H x 8-3/16" W x 5-9/16" D
- Color: Available in (WH) White or (BL) Black



SS326R, SS326C, SS326G

6-1/2" Two-Way, Weather Resistant, Indoor/Outdoor Rock Speakers

- Frequency response: 45-20,000 Hz \pm 3dB
- Power handling capacity: 50 Watts RMS
- 6-1/2" Polypropylene cone woofer, 3/4" Titanium dome tweeters with Ferrofluid™ cooled Neodymium magnet
- Sensitivity: @ 1 meter with 1 Watt input: 87dB
- Overall dimensions: 13" H x 12" W x 8" D
- Color: Available in (R) Rust, (C) Canyon or (G) Granite



Rust

Canyon

Granite

Sound Never Looked So Good



An almost invisible solution to deep, rich sound that can't be missed. NuTone's Powered Subwoofers are a must-have component for any modern theater or audio system. Homeowners get the most satisfying deep bass on their music CDs and special effects on DVDs. In-wall subwoofers offer a first of its kind design which conceals both the subwoofer and the amplifier that drives it, behind the wall. The deep, rich sound offers lower bass frequencies with excellent fidelity that adds depth and realism to music and movies.

Powered Subwoofers

SS4110PB

In-Wall 150 Watt Powered Subwoofer

- Ideal for new construction
- Frequency response: 30-300 Hz (-6dB) Bass reflex design
- Power handling capacity: 150 Watts RMS
- 10" woofer
- Sensitivity: @ 1 meter with 1 Watt input: 90dB (min.)
- Phase Reversal Switch
- Automatic turn on
- Volume control
- Power on/off switch
- UL listed
- US patent #6,687,380



Woofer Module/Cabinet and Amplifier Module Included



ES4110PBL

100 Watt Powered Subwoofer

- Frequency response: 35-(40-160) Hz* Bass reflex design
- Power handling capacity: 100 Watts RMS
- 10" low frequency woofer with paper cone and foam edge surround
- Sensitivity: @ 1 meter with 1 Watt input: 91dB
- Electronic, automatic resetting overload protection
- Overall dimensions: 18" H x 16" W x 13" D
- Color: Black

* Determined by cross-over setting



The missing piece to quality home sound. NuTone’s line of speakers and home theater equipment is rounded out with a valuable list of audio controls, accessories and rough-ins to complete the job. Choose from stereo volume control, home theater and audio distribution panels to a selection of rough-ins all backed by the NuTone name.

System Accessories

SVC101

Stereo Volume Control

- Ten step attenuation
- 75 Watts Peak, 25 Watts RMS
- Single gang box mountable
- Overall dimensions: 4-17/32" H x 2-25/32" W x 2-9/16" D



SVC104M

Impedance Matching Stereo Volume Control

- Twelve step attenuation
- Allows multiple speaker connections to the same amplifier without overloading
- Quick and easy field connection through detachable connector
- 150 Watts Peak, 50 Watts RMS
- Single gang box mountable
- Overall dimensions: 4-17/32" H x 2-25/32" W x 2-9/16" D



CPHT200WH or CPHT200

Home Theater Wall Panel

- For connecting Front Main, Center, Rear Channel Speakers and Powered Subwoofer to the A/V Receiver
- Output terminals: Via speaker push type terminals which accept up to 14 AWG speaker wire
- Dimensions: 4-5/8" H x 4-5/8" W x 1-5/16" D
- Depth behind wall: Approximately 7/16"
- Standard double gang box mountable
- Color: Available in (CPHT200WH) White or (CPHT200) Black



8ZAWH

Audio Distribution Panel

(use with SVC104M)

- For connecting up to 8 pairs of 8 ohm speakers to a single 8 ohm stereo amplifier/receiver
- Input terminals: Via detachable connectors which accept up to 14 AWG speaker wire
- Dimensions: 4-1/2" H x 6-1/4" W x 1-3/4" D
- Depth behind wall: Approximately 3/4"
- Triple gang box mountable
- Color: White



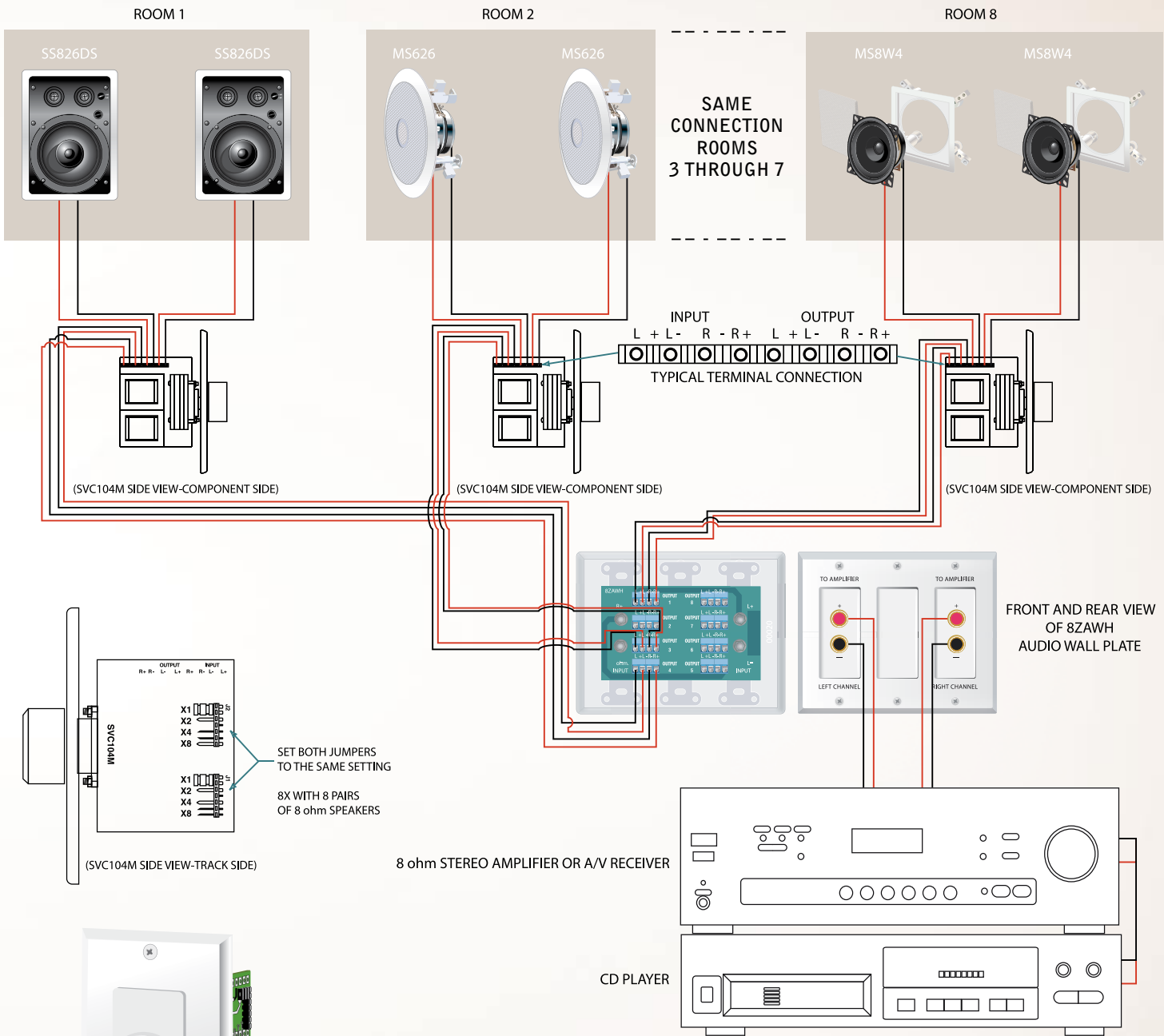
One SVC104M (see above) impedance matching volume control is required for each speaker pair.

ROUGH-INS

- IR665 – For use with MS625 ceiling speakers
- IR666 – For use with MS626 ceiling speakers
- IR668 – For use with SS628DS ceiling speakers
- IR884 – For use with MS8W4 speakers
- IR885 – For use with SS825 in-wall speakers
- IR886 – For use with SS826DS and JS826 in-wall speakers
- IR888 – For use with SS828, SS838 and JS828 in-wall speakers



Whole House Audio Diagram



- Connect up to 8 pairs of 8 ohm speakers to an 8 ohm amplifier/AV receiver without fear of burning the amplifier/AV receiver out.
- Connect one volume control per speaker pair and run wires to the audio wall plate 8ZAWH and then to the amplifier/AV receiver.
- Recommended wire size 14AWG.
- Refer to the table for jumper settings for number of speaker pairs other than 8 shown in the illustration above.

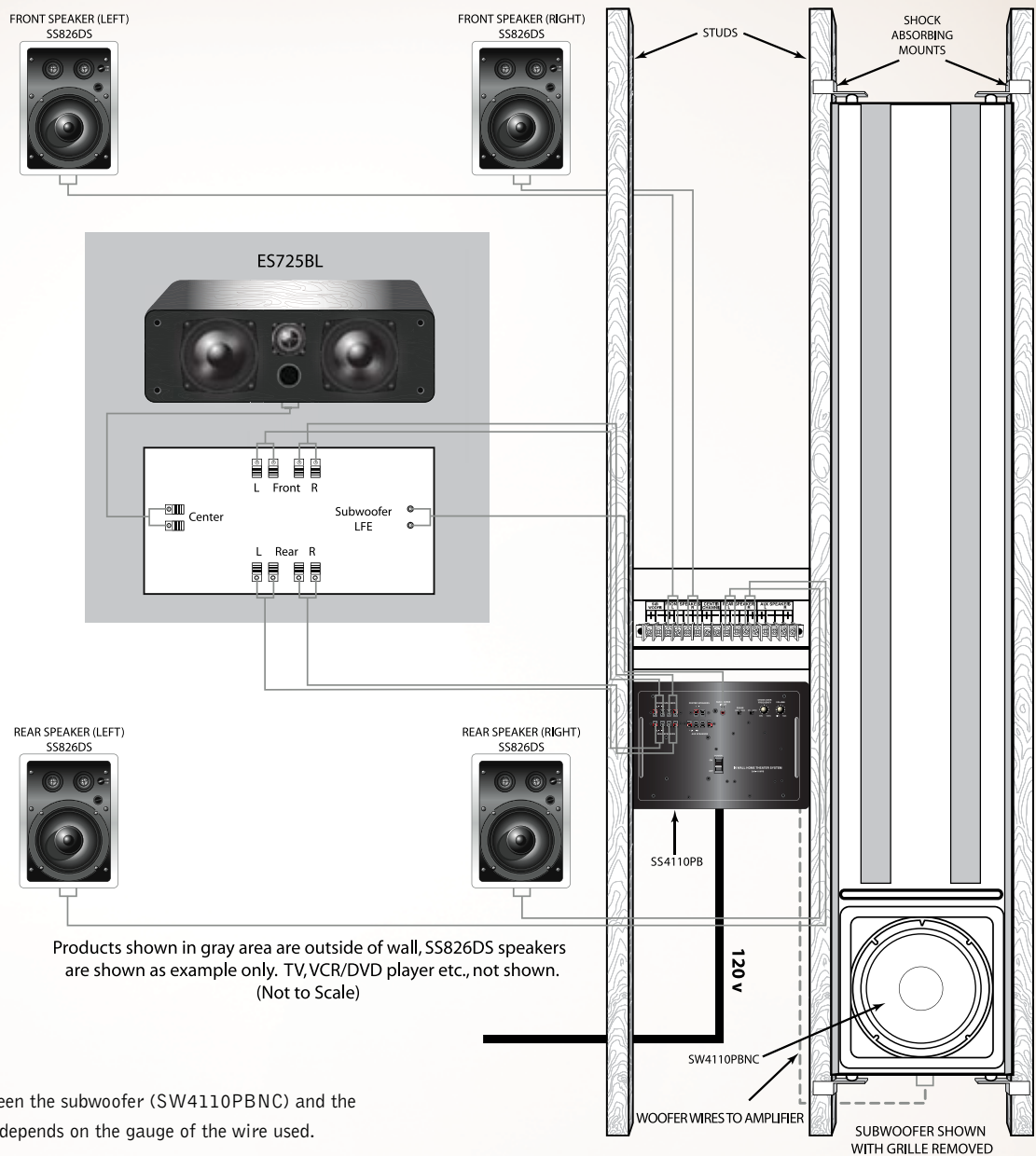
JUMPER SETTINGS FOR 8 ohm AMPLIFIERS

		8 ohm SPEAKER PAIRS							
4 ohm SPEAKER PAIRS	0	—	1X	2X	4X	4X	8X	8X	8X
	1	2X	4X	4X	8X	8X	8X	8X	
	2	4X	8X	8X	8X	8X			
	3	8X	8X	8X					
	4	8X							
JUMPER POSITION									

NOTE: TYPES OF SPEAKERS SHOWN ARE FOR EXAMPLE

Home Theater System Diagram

TYPICAL 5.1 HOME THEATER INSTALLATION WITH SS4110PB



- Maximum distance allowed between the subwoofer (SW4110PBNC) and the digital amplifier (SAA4110PB): depends on the gauge of the wire used.

Maximum distance allowed	Recommended minimum AWG
Up to 15'	16 AWG
15' - 25'	14 AWG
25' - 30'	12 AWG

Note: SAA4110PB digital amplifier can accept up to 12 AWG wire. SW4110PBNC subwoofer can accept up to 10 AWG wire.

- Maximum Sound Pressure Level (SPL) developed in a room: depends on room size and how it is furnished. Following table shows SPL values in moderately furnished rooms. Use an audio Y-connector from two amplifiers, if used, to the single subwoofer/LFE output on the AV Receiver.*

SPL (max)	Room size: up to 200 sq. ft.	Room size: 300 - 400 sq. ft. (use two SS4110PB)*
Middle of the room	115dB	118dB
Opposite wall of the room	118dB	121dB
Opposite corner of the room	121dB	124dB

Note: the above SPL levels are guideline approximates and will vary from room to room.

- In the illustration, the products shown in gray color are outside of the wall. For simplicity, TV/DVD player etc. are not shown. SS826DS speakers are shown as example only.
- In-wall powered subwoofer (SS4110PB) comes with 150 Watts RMS digital amplifier (SAA4110PB) and 10" subwoofer (SW4110PBNC).
- SS4110PB is audio industry's first truly in-wall high powered subwoofer. US patent #6,687,380.
- Powerful 150 Watts RMS Class-D digital audio amplifier with minimum 90% efficiency coupled with heavy duty Toroidal power transformer (efficiency over 90%) based power supply keeps system cool.
- Drywall thickness: designed for 3/8", 1/2" and 5/8" drywalls.
- Maximum distance allowed between digital amplifier (SAA4110PB) and the AV Receiver is 30'. Shielded cable recommended with distance over 12' to reduce noise pick up.
- UL listed

NuTone Specifications

MODEL	DESCRIPTION	RATED POWER	FREQUENCY RESPONSE	TWEETER TYPE	WOOFER TYPE	SENSITIVITY***
PROFESSIONAL SERIES						
SS326R,C,G	Two-Way, Weather Resistant	50 Watts RMS	45-20,000 Hz ±3dB	Dome	6-1/2" Polypropylene	87dB
SS626DS	Two-Way, Dual Voice Coil, Weather Resistant, Ceiling w/Switch	100 Watts RMS	40-23,000 Hz ±3dB	Dome**	6-1/2" Polypropylene	89dB
SS628DS	Two-Way, Dual Voice Coil, Weather Resistant, Ceiling w/Switch	100 Watts RMS	40-23,000 Hz ±3dB	Dome**	8" Polypropylene	89dB
ES113WH,BL	Twin Cube	100 Watts RMS	120-20,000 Hz ±3dB	Wide Range	Paper	86dB
SS825	Two-Way, In-Wall	80 Watts RMS	60-20,000 Hz ±3dB	Twin Dome**	5-1/4" Polypropylene	86dB
SS826DS	Two-Way, Dual Voice Coil, Weather Resistant, In-Wall w/Switch	100 Watts RMS	55-21,000 Hz ±3dB	Twin Dome**	6-1/2" Polypropylene	86dB
SS828	Two-Way, In-Wall	120 Watts RMS	45-22,000 Hz ±3dB	Twin Dome**	8" Polypropylene	88dB
SS838	Three-Way, In-Wall	130 Watts RMS	45-22,000 Hz ±3dB	Twin Dome**	8" Polypropylene	89dB
MS8W4	Micro Speaker Kit; (includes speaker, mounting (Dual Cone) frame, baffle and grille)	40 Watts Peak	100-20,000 Hz (-6dB)	Whizzer	4" Paper	88dB
MS625	Two-Way, Ceiling	70 Watts RMS	45-22,000 Hz ±3dB	Dome**	5-1/4" Polymica	86dB
MS626	Two-Way, Ceiling	100 Watts RMS	40-23,000 Hz ±3dB	Dome**	6-1/2" Polymica	89dB
SS525WH,BL	Two-Way, Surface Mount	70 Watts RMS	45-22,000 Hz ±3dB	Dome**	5-1/4" Polymica	86dB
BUILDER SERIES						
JS826	Two-Way, In-Wall	50 Watts RMS	55-20,000 Hz ±3dB	Dome	6-1/2" Coated Paper	86dB
JS828	Two-Way, In-Wall	80 Watts RMS	45-20,000 Hz ±3dB	Dome	8" Coated Paper	88dB
HOME THEATER PRODUCTS						
HTIB600WBL	Home Theater in a Box	600 Watts RMS	—	—	—	—
SS4110PB	In-Wall Powered Subwoofer	150 Watts RMS	30-300 Hz (-6dB)	—	10" Paper	90dB (min.)
ES4110PBL	Powered Subwoofer	100 Watts RMS	35-(40-160) Hz*	—	10" Paper	91dB
ES725BL	Two-Way, Center Channel	100 Watts RMS	60-22,000 Hz ±3dB	Dome**	5-1/4" Paper	86dB
ROUGH-INS						
IR665	Rough-In Frame for New Construction. Use with MS625. Color code: ORANGE					
IR666	Rough-In Frame for New Construction. Use with MS626. Color code: YELLOW					
IR668	Rough-In Frame for New Construction. Use with SS628DS. Color code: YELLOW					
IR884	Rough-In Frame for New Construction. Use with MS8W4. Color code: BLACK					
IR885	Rough-In Frame for New Construction. Use with SS825. Color Code: BLACK					
IR886	Rough-In Frame for New Construction. Use with SS826DS, JS826. Color code: ORANGE					
IR888	Rough-In Frame for New Construction. Use with SS828, SS838, JS828. Color code: YELLOW					

MODEL	DESCRIPTION	RATED POWER	MOUNTING
SWITCHES & CONTROLS			
SVC101	Stereo Volume Control, Ten Step Attenuation	75 Watts Peak	Single Gang
SVC104M	Impedance Matching Stereo Volume Control, Twelve Step Attenuation	150 Watts Peak	Single Gang
CPHT200WH,BL	Home Theater Wall Panel	N/A	Double Gang
8ZAWH	Audio Distribution Panel	N/A	Triple Gang

* Determined by cross-over setting
** Swivel Titanium dome tweeter with Ferrofluid™ cooled Neodymium magnet
*** Sensitivity or Sound Pressure Level @ 1 meter with 1 Watt input
The impedance of all speakers and controls is 8 ohms.
Specifications are subject to change without notice.

NuTone... life. style. home.



NuTone® is America's leading brand of residential built-in convenience products including door chimes, central vacuum systems, intercom systems, home theater speakers, medicine cabinets, ironing centers and ventilation fans.

Broan® is America's leading brand of residential ventilation products including range hoods, ventilation fans, heater/fan/light combination units, Indoor Air Quality (IAQ) Fresh Air Systems, built-in heaters, whole-house fans, attic ventilators, paddle fans and trash compactors.

Broan and NuTone are proud to be ENERGY STAR® partners.

NuTone®

www.NuTone.com

NuTone, 4820 Red Bank Road, Cincinnati, OH 45227 • **888-336-3948**

In Canada call **888-882-7626**



0 26715 14855 4